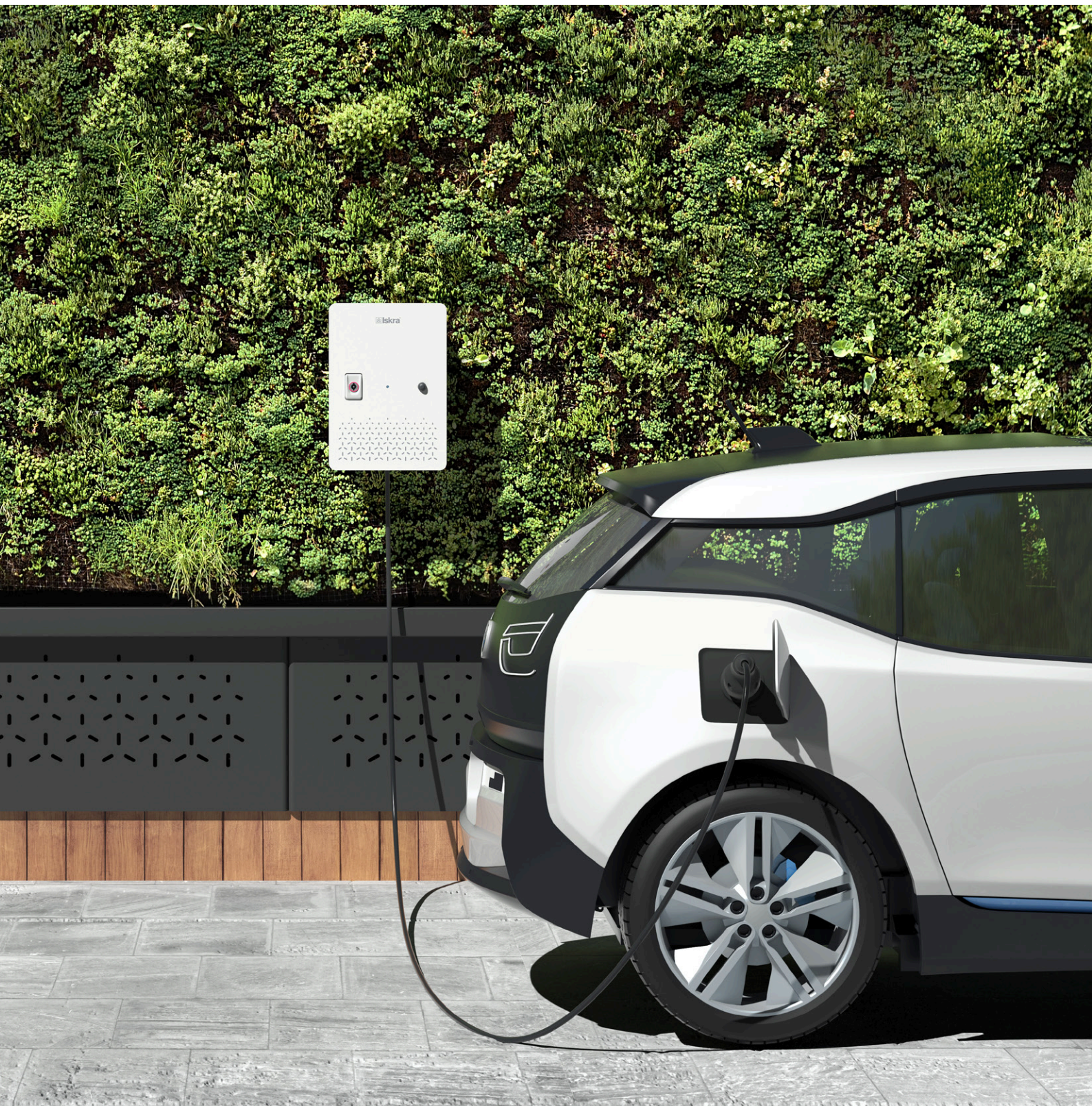
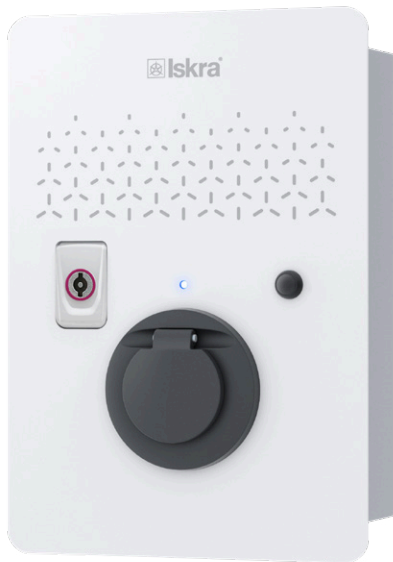


## **EVC** Wall-mounted EV chargers





## EVC Mono



### Many shapes and sizes of the EVC family

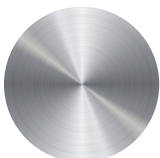
Iskra EVC charging stations work as independent units without connection to the central control system and are intended for fixed indoor or outdoor wall mounting.

EVC MONO chargers save space and are easy to operate, making them an ideal solution for residential use, while EVC DUO integrate two charging points in one station, providing a highly integrated and compact solution for wall mounting.

PLUS models are available for both types, that include: Iskra charge control app and Iskra dynamic power control with smart solar surplus charging if solar power plant is installed.

### Features

- ▶ AC Single-phase / Three-phase wall-mounted EV Charger
- ▶ 3.7 or 7.4 kW (1-phase) / 11 kW or 22 kW (3-phase)
- ▶ Supplied with a Type 2 connector\* or charging socket
- ▶ Easy to use, install and upgrade with modular features
- ▶ Most suitable for residential use
- ▶ Compatible with all electric vehicles
- ▶ Easy charging session tracking with the Web App
- ▶ Tesla charge port opener/unlocker
- ▶ UV resistant painted housing



**STRONG & DURABLE**  
All-metal rugged construction



**INDOOR & OUTDOOR MOUNTING**  
IP54 protection on all models

## EVC Duo



### Technical data

		EVC Mono	EVC Duo
Number of charging points		1	2
Plug or socket type		Type 2 (IEC 62196)*	Type 2 (IEC 62196)*
Max charging power	1-phase	3.7 kW or 7.4 kW	2× 3.7 kW or 7.4 kW
	3-phase	11 kW or 22 kW	2× 11 kW or 2× 22 kW
Max charging current	1-phase	1× 16 A (3.7 kW) or 1× 32 A (7.4 kW)	2× 16 A (3.7 kW) or 2× 32 A (7.4 kW)
	3-phase	3×16 A (11 kW) or 3×32 A (22 kW)	2× 3×16 A (11 kW) or 2× 3×32 A (22 kW)
Operating voltage	1-phase	180 V to 270 V	180 V to 270 V
	3-phase	310 V to 470 V	310 V to 470 V
Charge control app		Plus models only	Plus models only
Ambient temp. range		From -30 °C to +50 °C	From -30 °C to +50 °C
Weight		Approx. 8 – 10 kg	Approx. 10 – 12 kg
Dimensions		240 × 340 × 125 mm	340 × 440 × 125 mm

\* Type 1 or Type 3 plug optional.



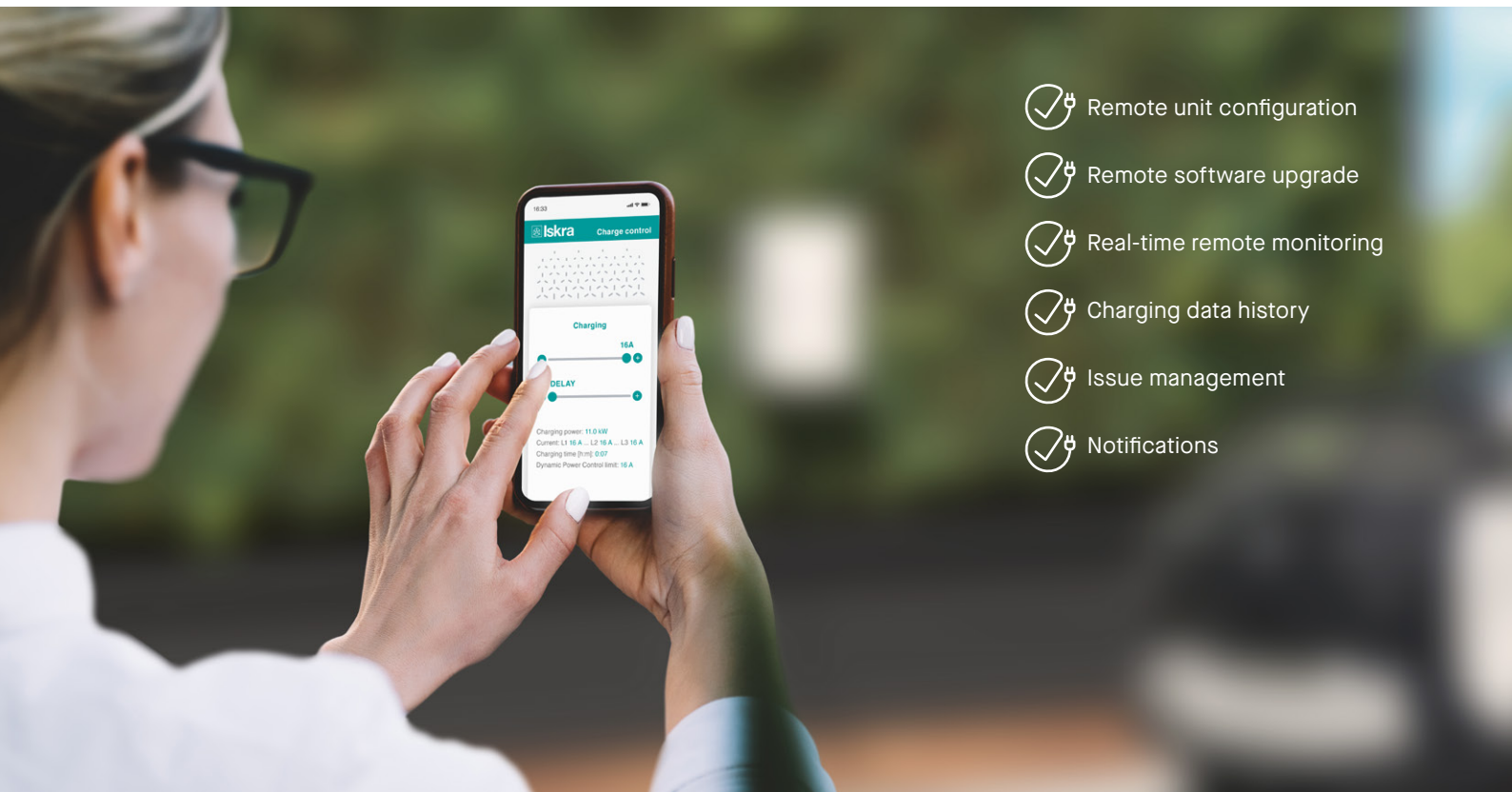
**UNIVERSAL**  
Compatible with all electric vehicles





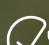



**SAFE & SECURE**  
Protected against cyber exploits

## Iskra charge control web app

Keep your EV charged in a reliable and cost-effective way. Our web app covers all the needs of EV owners related to charging infrastructure. The web-based platform with its easy to manage dashboard provides a user-friendly experience with all the necessary functionalities.



-  Remote unit configuration
-  Remote software upgrade
-  Real-time remote monitoring
-  Charging data history
-  Issue management
-  Notifications

## Rugged but stylish

We offer design customization options on larger order quantities. We use water and UV resistant paints and prints that can match your desired color scheme. Let us help you find a style that suits you best.

